



**TECHNICAL SPECS:**

Current Rating: 3.0AMP  
 Contact Resistance: 10mΩ Max  
 Dielectric Strength: Min 1000Vrms  
 Mechanical Life: Min 500 cycles  
 Mating Pin:  $\phi 0.40$  to  $\phi 0.56$ mm  
 Forces: (polished steel gauge  $\phi 0.47$ mm)  
 Insertion: 200g Max/Pin, Withdrawal: 60g Min/Pin  
 Operation Temperature: -40°C to +105°C

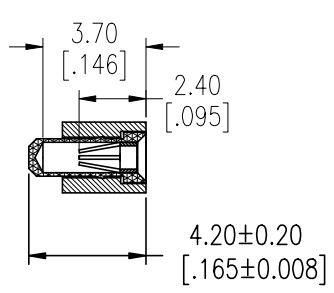
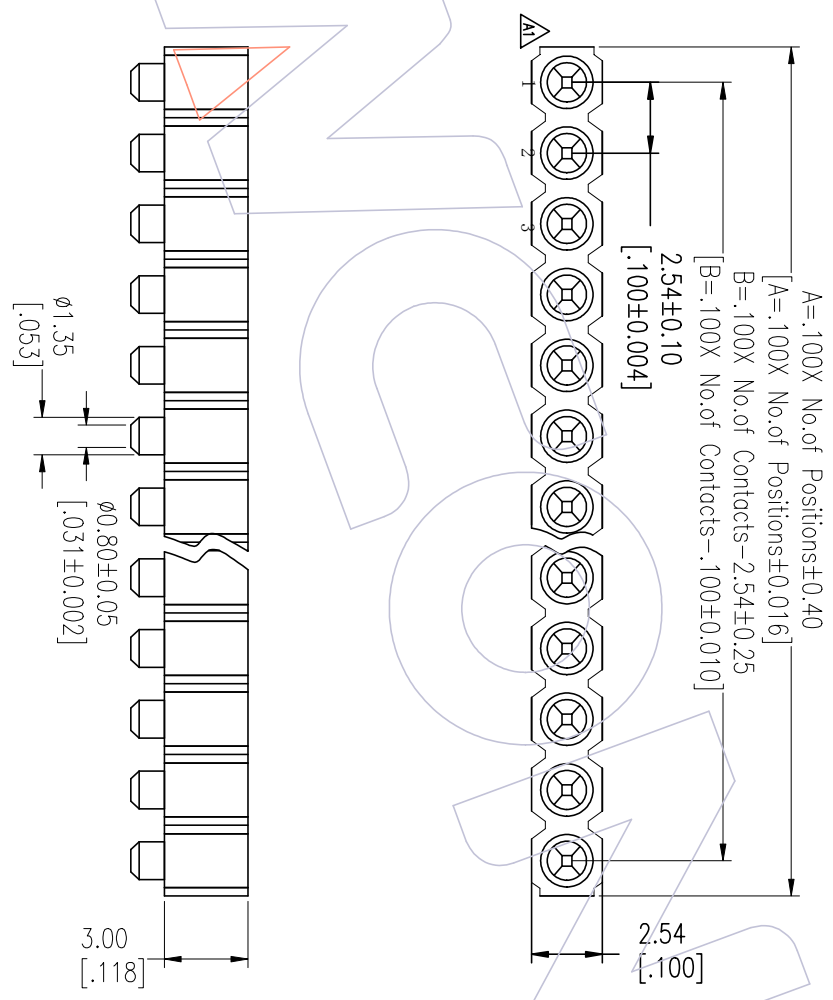
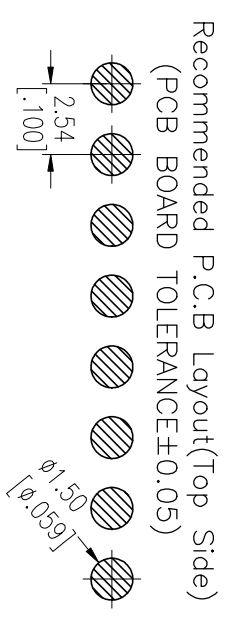
Sleeve: Brass CuZn36Pb3 (C36000)  
 Contact Clip (4 finger): BeCu (C17200)  
 Insulator Material: PPS+30%G.F (UL94V-0)

# Ordering Information

## 3520-301 XX M XX 042 X 1

- No. of Pin 2~50PIN
- Contact Plating S0=Gold Flash/Tin S3=10ur"Gold/Tin S4=1.5ur"Gold/Tin S5=30ur"Gold/Tin SN=Tin
- Packaging A=Tray T=Tube R=Reel&Tape

Item	Pitch	Mating
Standard	2.54	3510
Alternate		



OPERATION		DRAW		DATE		SCALE		PART NO.	
XX		CP		2024/03/19		FIT		3520-301XXMXX042X1	
X.XX		CHECK		DATE		UNIT		TITLE:	
X.XXX		X.XXX		X.XXX		mm		2.54mm MACHINED FEMALE HEADER	
Angle		APPROVE		DATE		SIZE		SINGLE ROW SMT H=3.00 L=4.2	
DIM		TOL		DATE		SHEET		Customer NO.	
CHANGE		APPROVE		DATE		1/1			
MODIFICATION DESCRIPTION		APPROVE		DATE		PROJ.			
NEW		APPROVE		DATE		PROJ.			
Modify Drawing		APPROVE		DATE		PROJ.			
2012/10/18		APPROVE		DATE		PROJ.			
2024/03/19		APPROVE		DATE		PROJ.			
REV		DATE		DATE		PROJ.			



Http: www.wcon.com  
 WCON-Dongguan Tel: +86 769 85358920 Fax: +86 769 85358915 E-mail: sales@wcon.com  
 WCON-Kunshan Tel: +86 512 57468408 Fax: +86 512 57468468 E-mail: sales@wcon.com