

HSF

Recommended P.C.B Layout (Top Side) (PCB BOARD TOLERANCE±0.05)

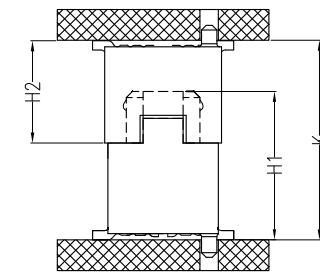
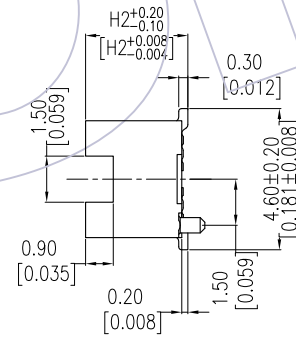
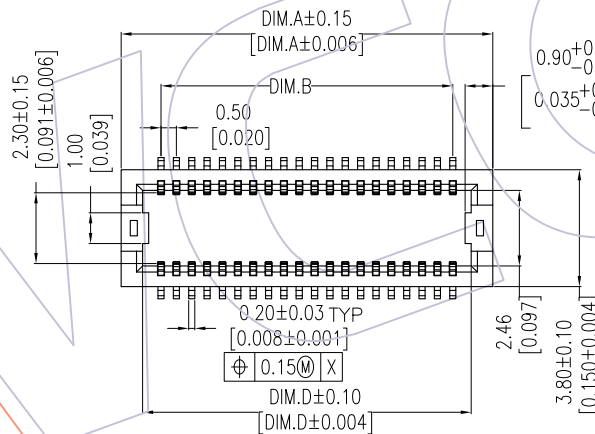
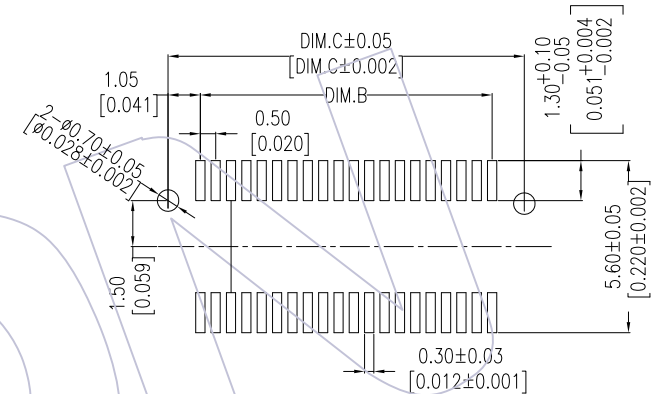
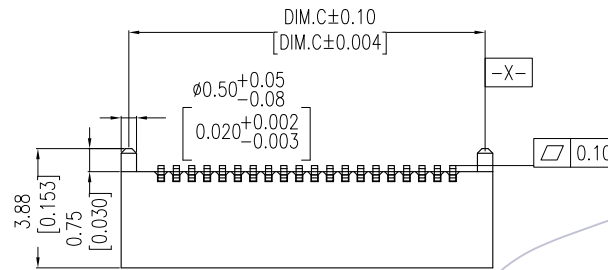
NOTES:
 Current Rating:0.5AMP
 Voltage Rating:50V AC/DC
 Contact Resistance:30mΩ max
 Withstand Voltage:100V AC for 1minute
 Insulation Resistance:100MΩ min
 Operation Temperature:-25°C to +105°C

Housing Material:PA9T(UL94V-0),NATURAL
 Contact Material:Copper alloy
 Fixing Material:Copper alloy
 Contact plating:Au over Ni
 Fixing plating:Sn over Ni

Ordering Information

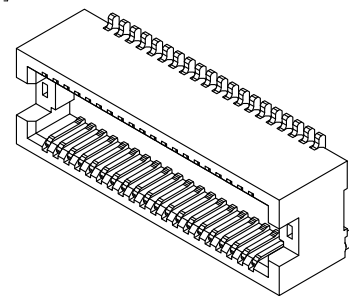
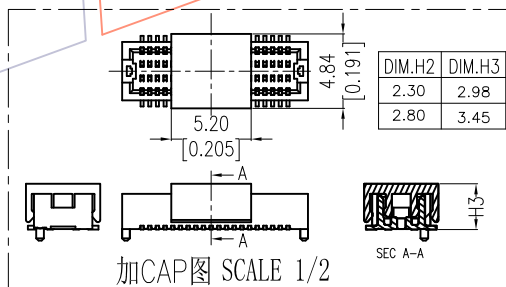
3622-P XXX - XXX XX X 01

No.of Pins	Housing High	Contact Plating	T=Tube
14P 36P	023=2.30	G1=3u"Gold	P=Tube+CAP
20P 40P	028=2.80	G3=10u"Gold	R=Tape&Reel+CAP
24P 50P	033=3.30	G4=15u"Gold	
30P 60P	038=3.80	G5=30u"Gold	
32P	043=4.30	H5=30u"Gold(Contact area,3u"Gold other area)	
	048=4.80		




MATED DRAWING(REF.)

ASS'Y HEIGHT(K)	PLUG(H2)	SOCKET(H1)
3.00	2.30	2.20
3.50	2.80	
4.00	2.80	
4.50	3.30	2.70
5.00	3.80	
5.50	4.30	
6.00	4.80	
6.50	3.30	
7.00	3.80	
7.50	4.30	4.80
8.00	4.80	



PART NO.	DIM.H2	PIN NO.	DIM.A	DIM.B	DIM.C	DIM.D
3622-PXXX-023XXX01	2.30	14	5.60	3.00	5.10	4.20
3622-PXXX-028XXX01	2.80	20	7.10	4.50	6.60	5.70
3622-PXXX-033XXX01	3.30	24	8.10	5.50	7.60	6.70
3622-PXXX-038XXX01	3.80	30	9.60	7.00	9.10	8.20
3622-PXXX-043XXX01	4.30	32	10.10	7.50	9.60	8.70
3622-PXXX-048XXX01	4.80	36	11.10	8.50	10.60	9.70
		40	12.10	9.50	11.60	10.70
		50	14.60	12.00	14.10	13.20
		60	17.10	14.50	16.60	15.70

OPERATION	DRAW	DATE	SCALE	Fit	PART NO.	 Http: www.wcon.com
x.X ±0.40	Morris	2017/10/18	UNIT	mm	3622-PXXX-XXXXXX01	
x.XX ±0.25	CHECK	DATE	SIZE	A4	TITLE:	WCON-Dongguan Tel: +86 769 85358920 Fax: +86 769 85358915 E-mail: sales@wcon.com
x.XXX ±0.15	APPROVE	DATE	SHEET	1/1	0.50pitch BTB MALE SMT TYPE	
Angle ± 3'			PROJ.		Customer NO.	WCON-Kunshan Tel: +86 512 57468408 Fax: +86 512 57468468 E-mail: salesks@wcon.com
DIM TOL						
AO	2017/10/18	NEW				
REV	DATE	MODIFICATION DESCRIPTION	CHANGE			