

HSF

NOTES:
 Rated Current:3.0AMP
 Contact Resistance:25mΩ max
 Withstand Voltage:500V AC/Minute
 Insulation Resistance:1000MΩ min
 Operation Temperature:-55°C to +105°C

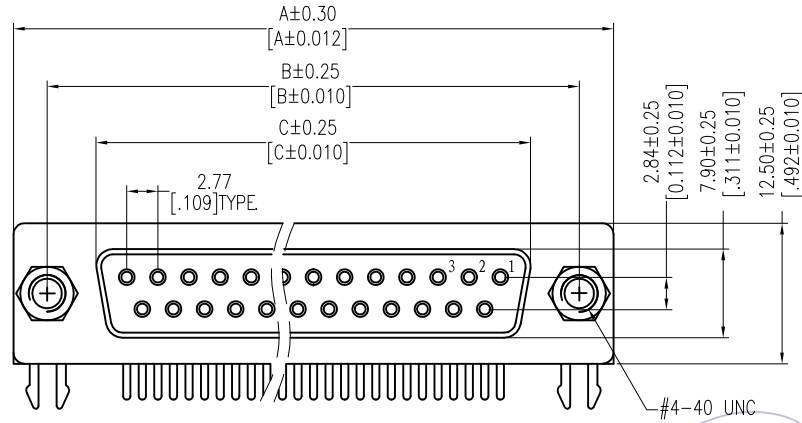
Contact Material:Brass
 Contact Plating:Au or Sn Over Ni
 Insulator Material:PBT+30%G.F UL94V-0
 Shell:Cold Roller Steel,Ni Plated
 Revit:Brass,Sn Over Ni Plated
 Screw:Brass,Ni Plated

Ordering Information

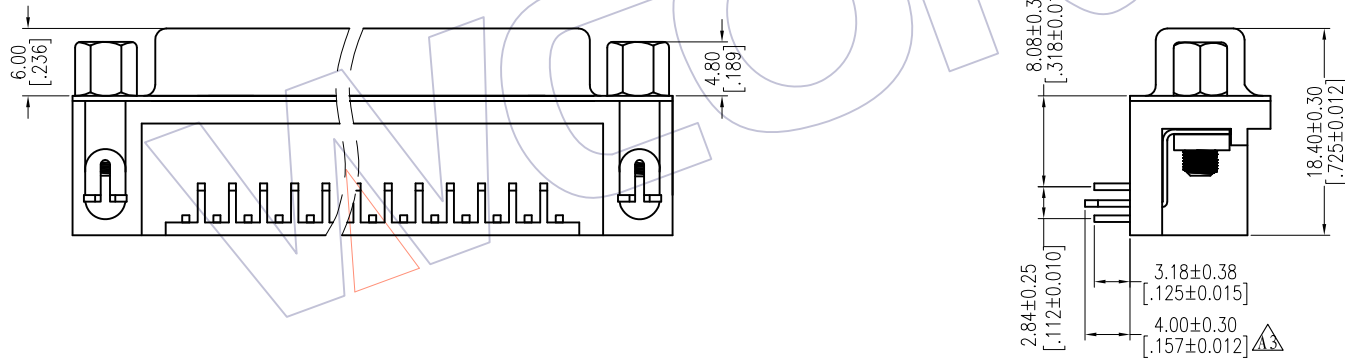
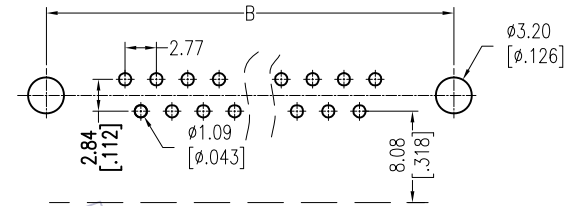
6223-XX F X N XX B 01

No. of Pins	Product Type	Contact Plating	Insulator Color
15,25,37P	W=With Revit With Screw M=With Revit Without Screw S=No Revit H=With Revit With Screw(Don't lock)	S0=Gold Flash/Tin S3=10u"Gold/Tin S4=15u"Gold/Tin S5=30u"Gold/Tin SN=Tin	W:White B:Black U:Blue

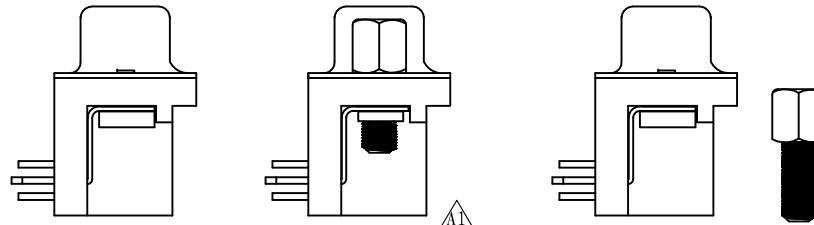
PINS	DIM "A"	DIM "B"	DIM "C"
15	39.14	33.32	24.66
25	53.04	47.04	38.38
37	69.32	63.50	54.83



Recommended P.C.B Layout(Top Side)
 (PCB BOARD TOLERANCE±0.05)



6223-XXFWNXXX01



6223-XXFMNXXX01

6223-XXFSNXXX01

6223-XXFHNXXX01

REV	DATE	MODIFICATION DESCRIPTION	CHANGE	OPERATION	DRAW	DATE	SCALE	FIT	PART NO.
A4	2014/06/21		Modify	OPERATION	Allen	2014/06/03	UNIT	mm	6223-XXFXNXXB01
A3	2014/06/03		Modify	x.X ±0.40	CHECK	DATE	SIZE	A4	
A2	2013/06/24		Modify	x.XX ±0.25	APPROVE	DATE	SHEET	1/1	TITLE: D-SUB FEMALE CONNECTOR
A0	2012/12/06		NEW	x.XXX ±0.15			PROJ.	Customer NO.	
				Angle ± 3'					
				DIM TOL					

WCON

Http: www.wcon.com

WCON-Dongguan Tel: +86 769 85358920 Fax: +86 769 85358915 E-mail: sales@wcon.com	WCON-Kunshan Tel: +86 512 57468408 Fax: +86 512 57468468 E-mail: salesks@wcon.com
---	--