

HSF

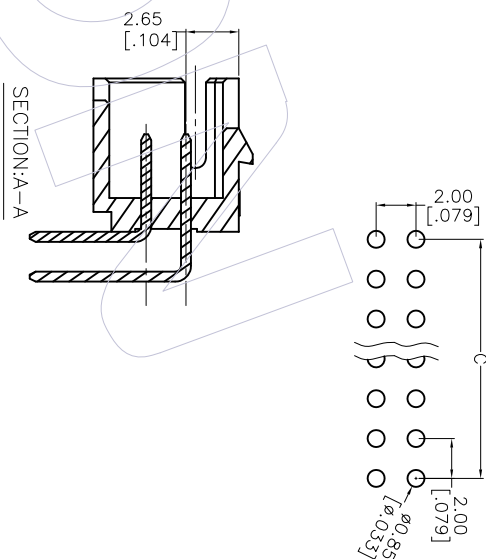
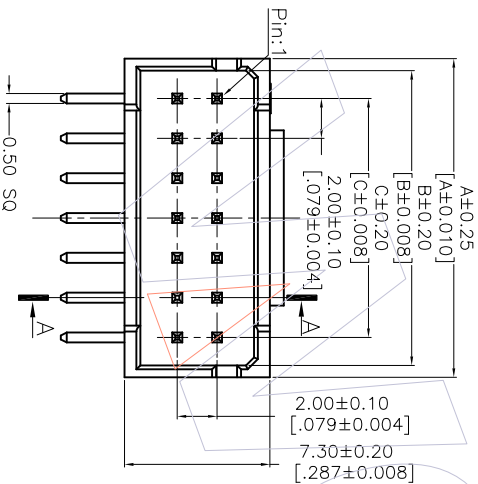
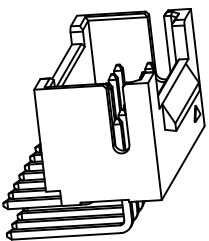
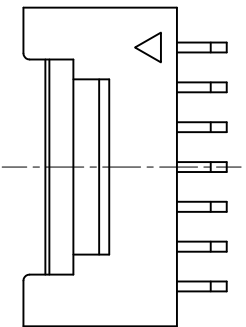
NOTES:

Current Rating::3.0A AMP
 Withstand Voltage:250V AC/minute
 Contact Resistance:30mΩ Max
 Withstand Voltage:1000V AC/Minute
 Insulation Resistance:1000MΩ Min
 Operation Temperature:-25°Cto+85°C
 Contact Material:Brass
 Contact plating:Au or Sn Over Ni
 Insulator Material:Polyester(UL94V-0)
 Standard:PA6T+30%G.F

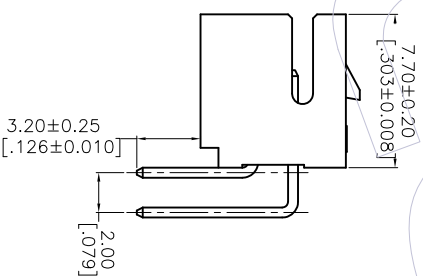
Ordering Information

WF2005-2WR XX E X 1

No. of Pins: 14P~40P
 Insulator Color: E= Beige
 Packing: T=Tube
 0=PE Bag



RECOMMENDED PCB LAYOUT
 TOLERANCE IS ±0.05



Circuits	Part NO.	Dimensions		
		A	B	C
2X07	WF2005-2WR07EX1	16.00[0.630]	14.80[0.583]	12.00[0.472]
2X08	WF2005-2WR08EX1	18.00[0.709]	16.80[0.661]	14.00[0.551]
2X09	WF2005-2WR09EX1	20.00[0.787]	18.80[0.740]	16.00[0.630]
2X10	WF2005-2WR10EX1	22.00[0.866]	20.80[0.819]	18.00[0.709]
2X11	WF2005-2WR11EX1	24.00[0.945]	22.80[0.898]	20.00[0.787]
2X12	WF2005-2WR12EX1	26.00[1.024]	24.80[0.976]	22.00[0.866]
2X13	WF2005-2WR13EX1	28.00[1.102]	26.80[1.055]	24.00[0.945]
2X14	WF2005-2WR14EX1	30.00[1.181]	28.80[1.134]	26.00[1.024]
2X15	WF2005-2WR15EX1	32.00[1.260]	30.80[1.213]	28.00[1.102]
2X16	WF2005-2WR16EX1	34.00[1.339]	32.80[1.291]	30.00[1.181]
2X17	WF2005-2WR17EX1	36.00[1.418]	34.80[1.370]	32.00[1.260]
2X18	WF2005-2WR18EX1	38.00[1.496]	36.80[1.449]	34.00[1.339]
2X19	WF2005-2WR19EX1	40.00[1.575]	38.80[1.528]	36.00[1.418]
2X20	WF2005-2WR20EX1	42.00[1.654]	40.80[1.606]	38.00[1.496]

REV	DATE	MODIFICATION DESCRIPTION	CHANGE	OPERATION		DRAW	DATE	SCALE		PART NO.	TITLE:	Customer NO.
				mm	inch			UNIT	SIZE			
A0	2013.06.08	NEW	-	X.XXX	±0.15	Sam	2013.06.08	A4	1/1	WF2005-2WRXXEX1	2.00mm PH WTB WAFER 90° DIP	
				X.XXX	±0.25							
				X.XXX	±0.40							
				Angle	± 3'							
				DIM	TOL							
						APPROVE						

WCON

WCON-Dongguan
 Tel: +86 769 85358920
 Fax: +86 769 85358915
 E-mail: sales@wcon.com

WCON-Kunshan
 Tel: +86 512 57468408
 Fax: +86 512 57468468
 E-mail: sales@wcon.com