

# HSP

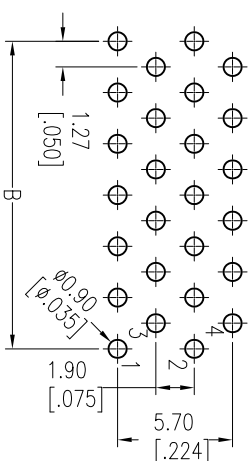
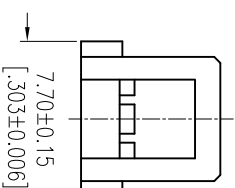
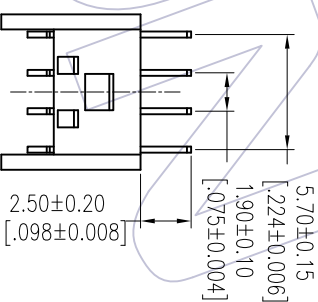
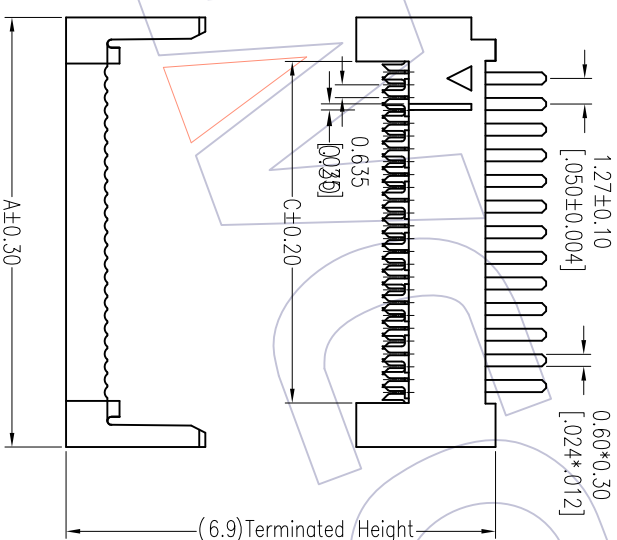
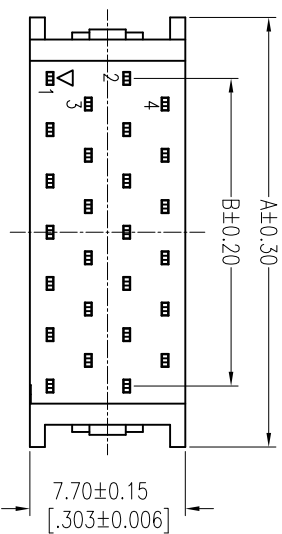
**NOTES:**

Rated Current: 1.0AMP  
 Contact Resistance: 30mΩ max  
 Withstand Voltage: 500V AC/DC  
 Insulation Resistance: 1000MΩ min  
 Operation Temperature: -40°C to +105°C  
 Contact Material: Phosphor Bronze  
 Contact Plating: Sn Over Ni  
 Insulator Material: LCP+30%G.F UL94V-0  
 Cover Material: PBT+15%G.F UL94V-0

## Ordering Information

5341 - XX P XX X 0 2

No. of Pins  
 Contact Plating  
 SW=Matte Tin  
 Color Insulator  
 B=Black  
 G=Grey(427C)



No. of Pins	A	B	C
10	11.13	5.08	6.76
20	17.48	11.43	13.11
26	21.29	15.24	16.92
30	23.83	17.78	19.46
40	30.18	24.13	25.81
50	36.53	30.48	32.16
60	42.88	36.83	38.51
68	47.96	41.91	43.59
70	49.23	43.18	44.86
72	50.50	44.45	46.13
80	55.58	49.53	51.21
90	61.93	55.88	57.56
100	68.28	62.23	63.91

OPERATION	XX	±0.40	DRAW	Tang	DATE	2014/05/07	SCALE	UNIT	FIT	PART NO.	5341-XXPXXX02
CHECK	XXX	±0.25	CHECK		DATE		SIZE	A4		TITLE:	1.27mm DIP PLUG FOUR ROW FOOT
ANGLE	XXX	±0.15	APPROVE		DATE		SHEET	1/1		"J"-TYPE (REVERSE)	
REV	DATE	MODIFICATION DESCRIPTION	CHANGE	DIM	TOL		PROJ.			Customer NO.	

WCON-Dongguan  
 Tel: +86 769 85358920  
 Fax: +86 769 85358915  
 E-mail: sales@wcon.com

WCON-Kunshan  
 Tel: +86 512 57468408  
 Fax: +86 512 57468468  
 E-mail: sales@wcon.com