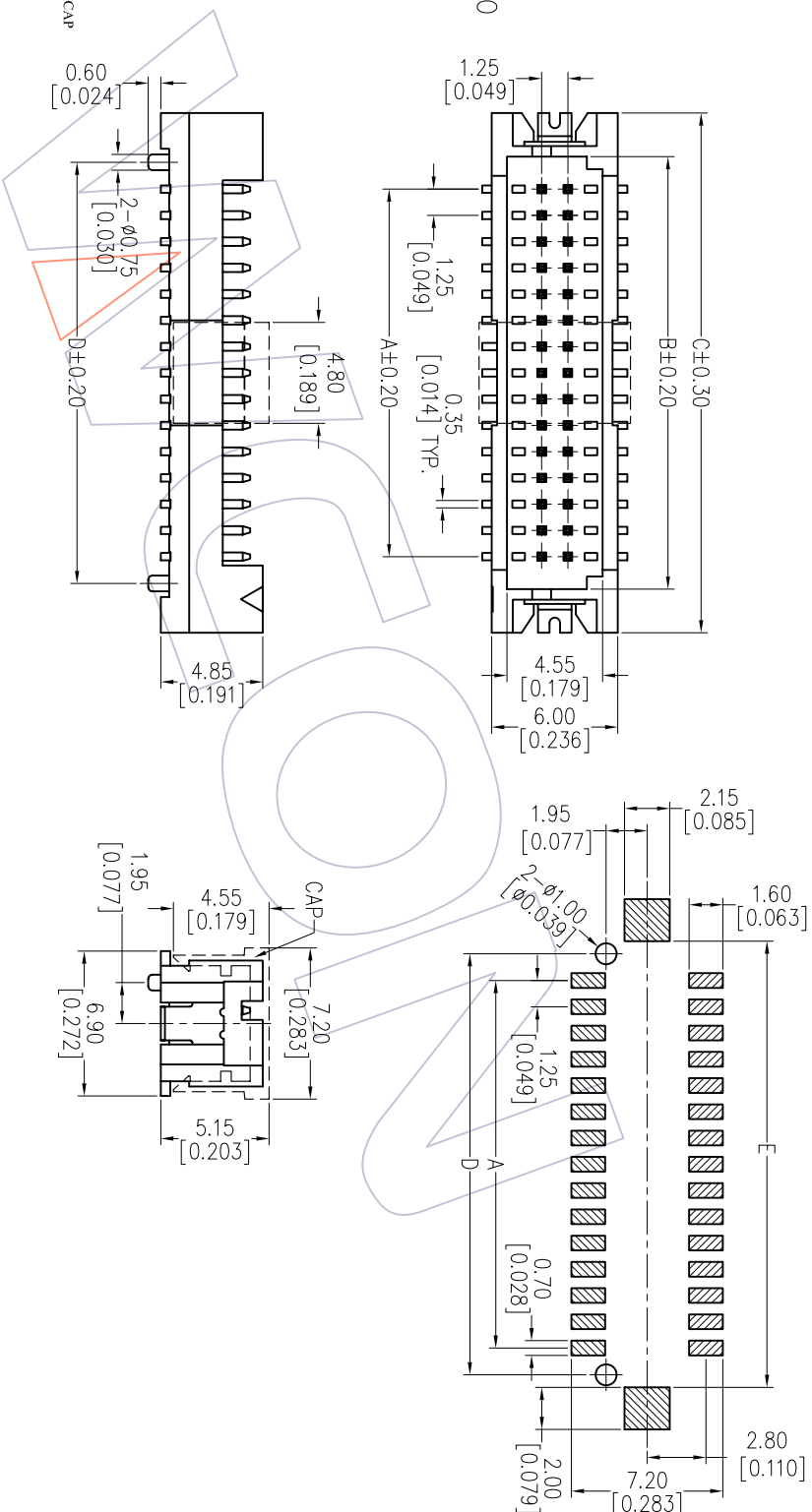


HSF

NOTES:

Rating Voltage: 250V AC/DC
 Current Rating: 1.0AMP
 Contact Resistance: 10mΩ max
 Withstand Voltage: 250V AC/DC
 Insulation Resistance: 100MΩ min
 Operation Temperature: -25°C to +85°C
 Contact Material: Brass
 Contact plating: Au Or Sn Over Ni
 Insulator Material: PA9T+30%GF UL94V-0

Recommended P.C.B Layout (Top Side)
 (PCB BOARD TOLERANCE±0.05)



Ordering Information

WFI253 - WM XX XX X X 1

No. of pins: Contact Plating Color Packing
 10=10pin S0=Gold Flash/Tin B=Black T=Tube
 20=20pin S1=10r/Gold/Tin E=Beige P=Tube-CAP
 30=30pin S4=15r/Gold/Tin T=Natural R=Tapack/Keel-CAP
 40=40pin S5=30r/Gold/Tin W=White
 CR=Gold Flash GS=100r Gold GS=150r Gold GS=300r Gold Blank=Tin

Specification & Ordering Information:

Circuit	Part No.	Dimension				
		A	B	C	D	E
10	WFI253-WM10XT1	5.00	8.10	12.25	7.55	8.75
20	WFI253-WM20XT1	11.25	14.35	18.50	13.80	15.00
30	WFI253-WM30XT1	17.50	20.60	24.75	20.05	21.25
40	WFI253-WM40XT1	23.75	26.85	31.00	26.30	27.50

REV	DATE	MODIFICATION DESCRIPTION	CHANGE	OPERATION	DRAW	DATE	SCALE	FIT	PART NO.	TITLE:	Customer NO.
AO	2012/09/05	NEW		XX	JYHuang	2012/09/05	mm A4	1/1	SEE TAB	1.25 WAFER SMT	
				XX	CHECK	DATE	SIZE	SHEET			
				XXX	APPROVE	DATE	PROJ.				
				Angle							
				± 3'							
				±0.15							
				±0.25							
				XX							
				±0.40							

WCON

WCON-Dongguan Tel: +86 769 85358920
 WCON-Kunshan Tel: +86 512 57468408
 WCON-Fax: +86 769 85358915
 WCON-Fax: +86 512 57468468
 WCON-E-mail: sales@wcon.com
 WCON-E-mail: sales@wcon.com