



Recommended P.C.B Layout (Top Side)  
(PCB BOARD TOLERANCE ± 0.05)

NOTES:

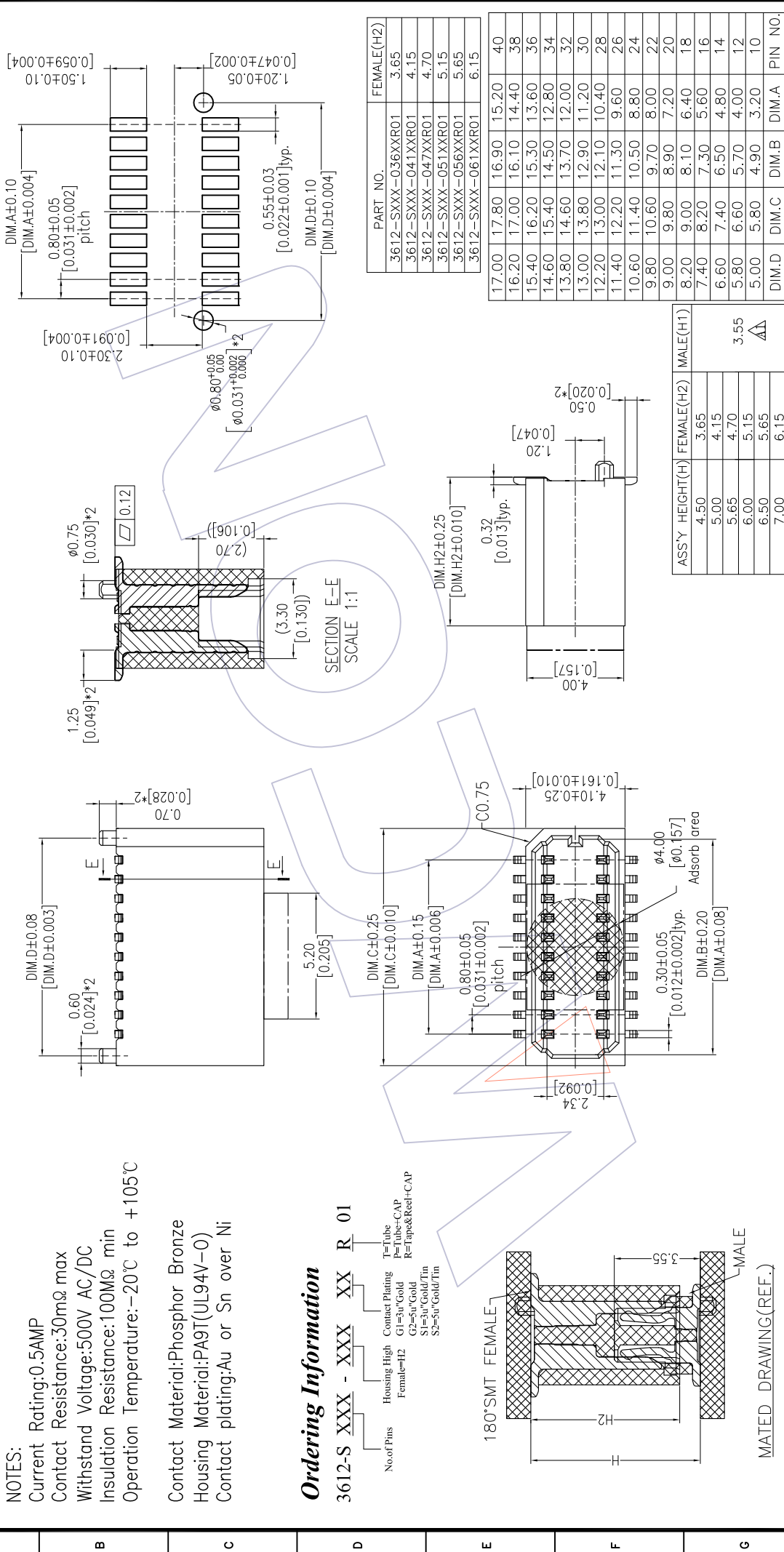
Current Rating:0.5AMP  
Contact Resistance:30mΩ max  
Withstand Voltage:500V AC/DC  
Insulation Resistance:100MΩ min  
Operation Temperature:-20°C to +105°C

Contact Material:Phosphor Bronze  
Housing Material:PA9T(UL94V-0)  
Contact plating:Au or Sn over Ni

Ordering Information

3612-S XXX - XXX XX R 01

No. of Pins      Housing High      Contact Plating      T=Tube  
Female=H2      G1=50µ Gold      P=Tube-CAP      R=Tube&Reel-CAP  
G2=50µ Gold      S1=50µ Gold/Tin      S2=50µ Gold/Tin



PART NO.	FEMALE(H2)
3612-SXXX-036XXR01	3.65
3612-SXXX-041XXR01	4.15
3612-SXXX-047XXR01	4.70
3612-SXXX-051XXR01	5.15
3612-SXXX-056XXR01	5.65
3612-SXXX-061XXR01	6.15

PART NO.	FEMALE(H2)	MALE(H1)
17.00	17.80	16.90
16.20	17.00	16.10
15.40	16.20	15.30
14.60	15.40	14.50
13.80	14.60	13.70
13.00	13.80	12.90
12.20	13.00	12.10
11.40	12.20	11.30
10.60	11.40	10.50
9.80	10.60	9.70
9.00	9.80	8.90
8.20	9.00	8.10
7.40	8.20	7.30
6.60	7.40	6.50
5.80	6.60	5.70
5.00	5.80	4.90
DIM.D	DIM.C	DIM.B
DIM.A	DIM.A	DIM.A
		PIN NO.

REV	DATE	MODIFICATION DESCRIPTION	CHANGE	OPERATION	DRAW	DATE	SCALE	FIT	PART NO.
A1	2013/05/02	Modify	△	X.X ±0.40	Tsingn	2013/05/02	UNIT	mm	3612-SXXX-XXXXR01
A0	2013/03/22	NEW	—	X.XX ±0.25	CHECK		SIZE	A4	
				X.XXX ±0.15	APPROVE		SHEET	1/1	
				Angle ± 3°			PROJ.	☐	
<p>Customer NO.      TITLE: 0.80mm B TO B "M" FEMALE 180° SMT TYPE</p>									
<p>WCON-Dongguan      WCON-Kunshan      WCON      Http: www.wcon.com Tel: +86 769 85358920      Tel: +86 512 57468408      Tel: +86 512 57468408 Fax: +86 769 85358915      Fax: +86 512 57468468      E-mail: sales@wcon.com      E-mail: sales@wcon.com</p>									